
	Document: Technical Description Version: 1 Status: actual Author: bs Date: 01-12-17 Approved: ro Date: 01-12-17 File: PC	EAM111 GAC to MTU Interface Module GAC PIB4088 (March 2001)	
---	---	---	---

EAM111 GAC to MTU INTERFACE MODULE

Introduction

The EAM111 is an electronic interface module designed to work with the MTU MDEC electronic engine controls. The module can accept a speed setting voltage range signal as wide as 0-10V DC or a narrow trimming voltage centered around 5.0V DC. The module's output can be configured to be either a 4-20 or 0-20 mA signal for the MDEC system. Integral range and zero adjustments allow the installer to precisely configure the output vs. the input characteristics.

Power for the module comes from the 24V DC system powering the MDEC engine control.

Wiring

See Wiring Diagram.

Note 1: When using the load sharing/ sync input with 5.0V DC at Terminal C, a jumper must be placed between Terminals E and 2. Terminals A, B, and D shall all be left open. This will yield about a 12 mA output. Adjust the zero adjustment for exactly 12 mA with the load sharing module connected to the control (5.0V DC at Terminal C).

Note 2: To change from a 0-20 ma range to a 4-20 ma range, a jumper must be added between Terminals A and B.

Note 3: The common battery minus connections between the MDEC control, the EAM111, and the load sharing and synchronizer system should be as direct as possible electrically (minimum voltage difference).

Note 4: The MDEC must be programmed to accept an external speed input signal.

Specifications

Input Impedance (Terminals D & 4)	1K ohms, min
Input impedance (Terminals C & 4)	2 M ohms
Output capability (Terminals 3 & 4)	20 mA up to 4.5V DC
Output transfer function (C vs out)	?
Output transfer function (D vs out)	? adjustable
DC supply voltage (Terminals 1 & 4)	15 to 32V DC
DC supply current (Terminals 1 & 4)	30 mA
Temp Range	-40° to +85°C



Engine
Governing
Systems

Document: Technical Description
Version: 1
Status: actual
Author: bs **Date:** 01-12-17
Approved: ro **Date:** 01-12-17
File: PC

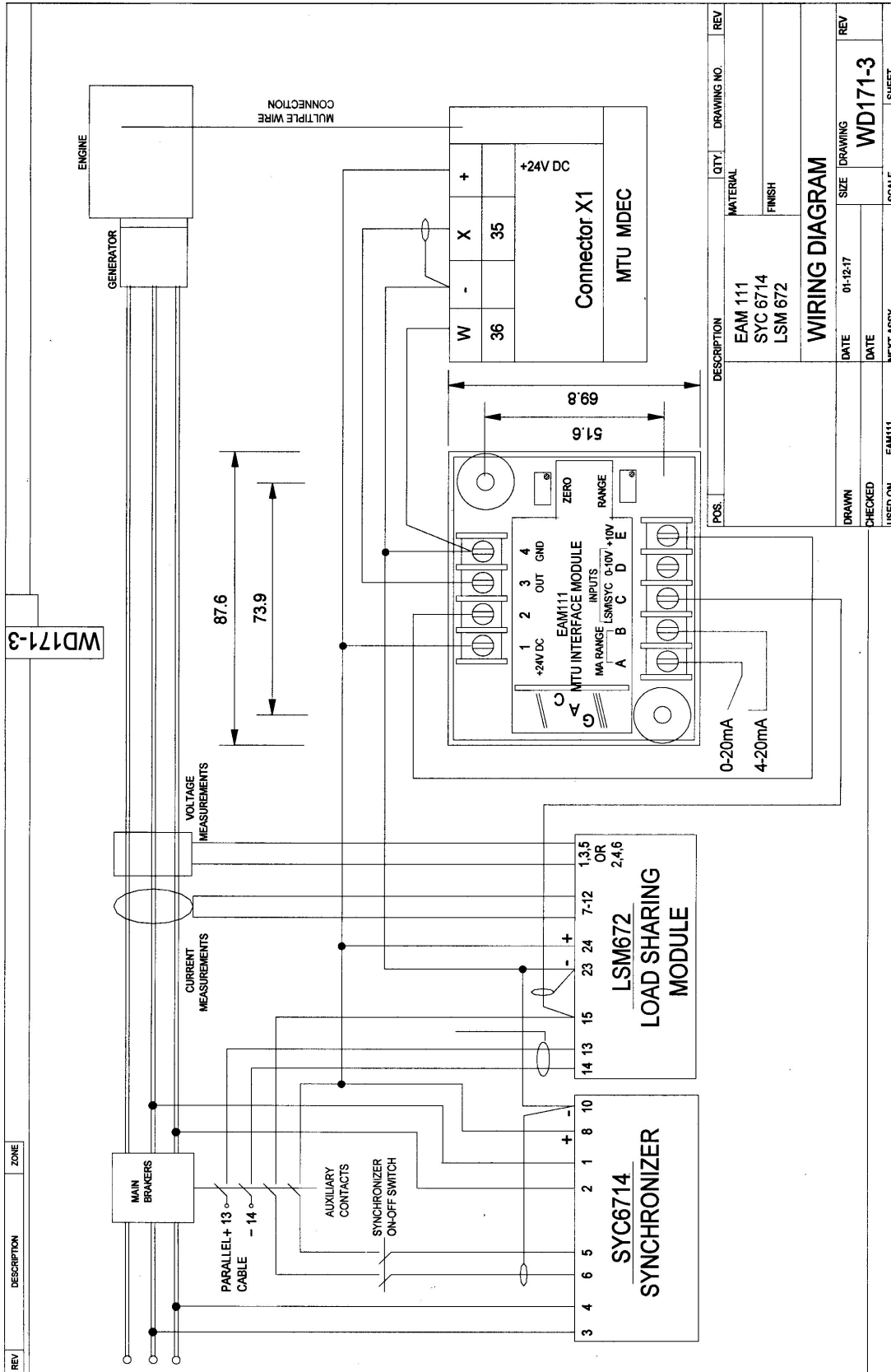
EAM111 GAC to MTU Interface Module

GAC PIB4088 (March 2001)



HUEGLI TECH LTD
SWITZERLAND
Tel.: +41-62-916 50 30
Fax: +41-62-916 50 35

Wiring Diagram WD171-3 (EAM 111 & SYC 6714 & LSM 672)





Engine
Governing
Systems

Document: Technical Description
Version: 1
Status: actual
Author: bs **Date:** 01-12-17
Approved: ro **Date:** 01-12-17
File: PC

**EAM111
GAC to MTU
Interface Module**

GAC PIB4088 (March 2001)



HUEGLI TECH LTD
SWITZERLAND
Tel.: +41-62-916 50 30
Fax: +41-62-916 50 35

Wiring Diagram WD171-4 (EAM 111 & SYC 6714 & LSM 201)

